

# LIGHTWEIGHT MILITARY SHUNTS – 50 MILLIVOLT

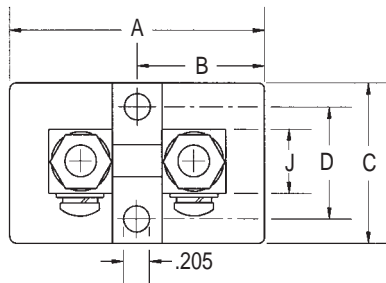
NON-STANDARD CURRENT AND MILLIVOLT RATED LIGHTWEIGHT SHUNTS AVAILABLE UPON REQUEST

CATALOG NO.	TYPE DESIGNATION	MS PART NUMBER	AMP	CONFORM TO MILITARY SPEC. MIL-S-61B							
				A	B	C	D	E	F	G	J
MSA100-10A50	MSA100	MS91586-8	10	2	1	1 1/4	.875	-	5/8	1/2	1/2
MSA150-15A50	MSA150	MS91586-9	15	2	1	1 1/4	.875	-	5/8	1/2	1/2
MSA200-20A50	MSA200	MS91586-10	20	2	1	1 1/4	.875	-	5/8	1/2	1/2
MSA300-30A50	MSA300	MS91586-1	30	2	1	1 1/4	.875	-	5/8	1/2	1/2
MSA500-50A50	MSA500	MS91586-2	50	2	1	1 1/4	.875	-	5/8	1/2	1/2
MSA750-75A50	MSA750	MS91586-3	75	2	1	1 1/4	.875	-	5/8	1/2	1/2
MSA800-80A50	MSA800	MS91586-4	80	2	1	1 1/4	.875	-	5/8	1/2	1/2
MSA850-85A50	MSA850	MS91586-5	85	2	1	1 1/4	.875	-	5/8	1/2	1/2
MSA101-100A50	MSA101	MS91586-6	100	2	1	1 1/4	.875	-	5/8	1/2	1/2
MSA151-150A50	MSA151	MS91586-7	150	2	1	1 1/4	.875	-	5/8	1/2	1/2
MSB171-170A50	MSB171	MS91587-1	170	3 1/4	1 5/8	1 3/4	1.25	3/8-16	-	3/4	1
MSB201-200A50	MSB201	MS91587-2	200	3 1/4	1 5/8	1 3/4	1.25	3/8-16	-	3/4	1
MSB251-250A50	MSB251	MS91587-3	250	3 1/4	1 5/8	1 3/4	1.25	3/8-16	-	3/4	1
MSB301-300A50	MSB301	MS91587-4	300	3 1/4	1 5/8	1 3/4	1.25	3/8-16	-	3/4	1
MSB401-400A50	MSB401	MS91587-5	400	3 1/4	1 5/8	1 3/4	1.25	3/8-16	-	3/4	1
MSB451-450A50	MSB451	MS91587-6	450	3 1/4	1 5/8	1 3/4	1.25	3/8-16	-	3/4	1
MSB501-500A50	MSB501	MS91587-7	500	3 1/4	1 5/8	1 3/4	1.25	3/8-16	-	3/4	1
MSB601-600A50	MSB601	MS91587-8	600	3 1/4	1 5/8	1 3/4	1.25	3/8-16	-	3/4	1
MSC801-800A50	MSC801	MS91588-1	800	4 1/2	2 1/4	2 1/2	2	1/2-13	-	1	1 1/2
MSC102-1000A50	MSC102	MS91588-2	1000	4 1/2	2 1/4	2 1/2	2	1/2-13	-	1	1 1/2
MSC122-1200A50	MSC122	MS91588-3	1200	4 1/2	2 1/4	2 1/2	2	1/2-13	-	1	1 1/2

DIMENSIONS IN INCHES  
DIMENSIONS SUBJECT TO CHANGE WITHOUT NOTICE

RATED ACCURACY ± .6%

MSA STYLE SHUNTS



MSB & MSC STYLE SHUNTS

